

# STONE**E**VOLUTION

By Terratinta Ceramiche®

---



With the **STONE** concept we have created a range that produces a stone with a timeless charm, always fashionable. The **STONEEVOLUTION** collection, thanks to the latest technologies, mix together the ancient mood of natural stone with the avantgarde of this project in 2 colours and 3 finishes: a unique interpretation.

# Grijs

# 4

Available sizes

Packaging

Technical features

# Zwart

# 16



30

32

34

# GRIJS

---

**MATT**



---

**“Be fearful  
of  
mediocrity.”**

**Jonathan Ellery**

---

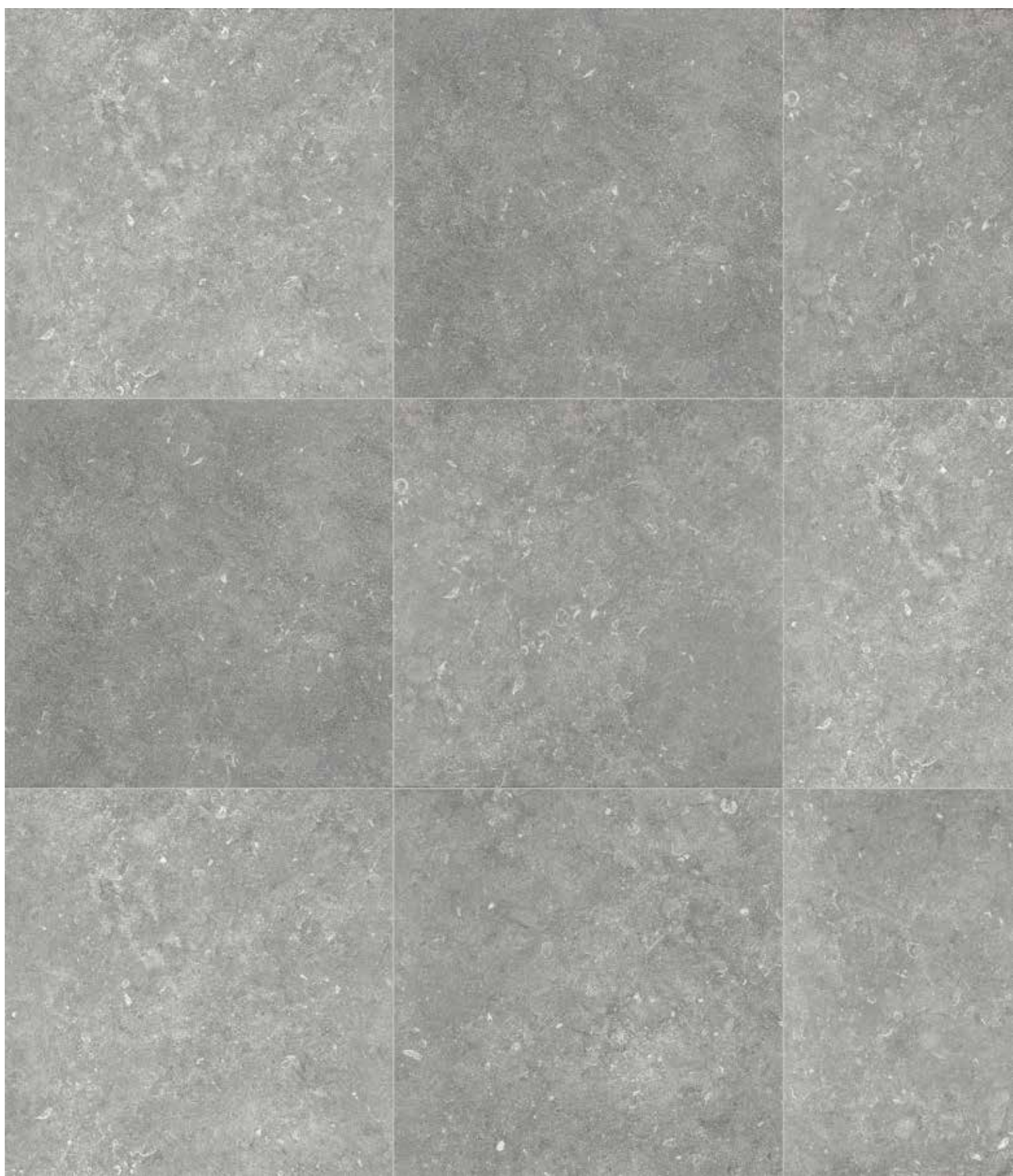


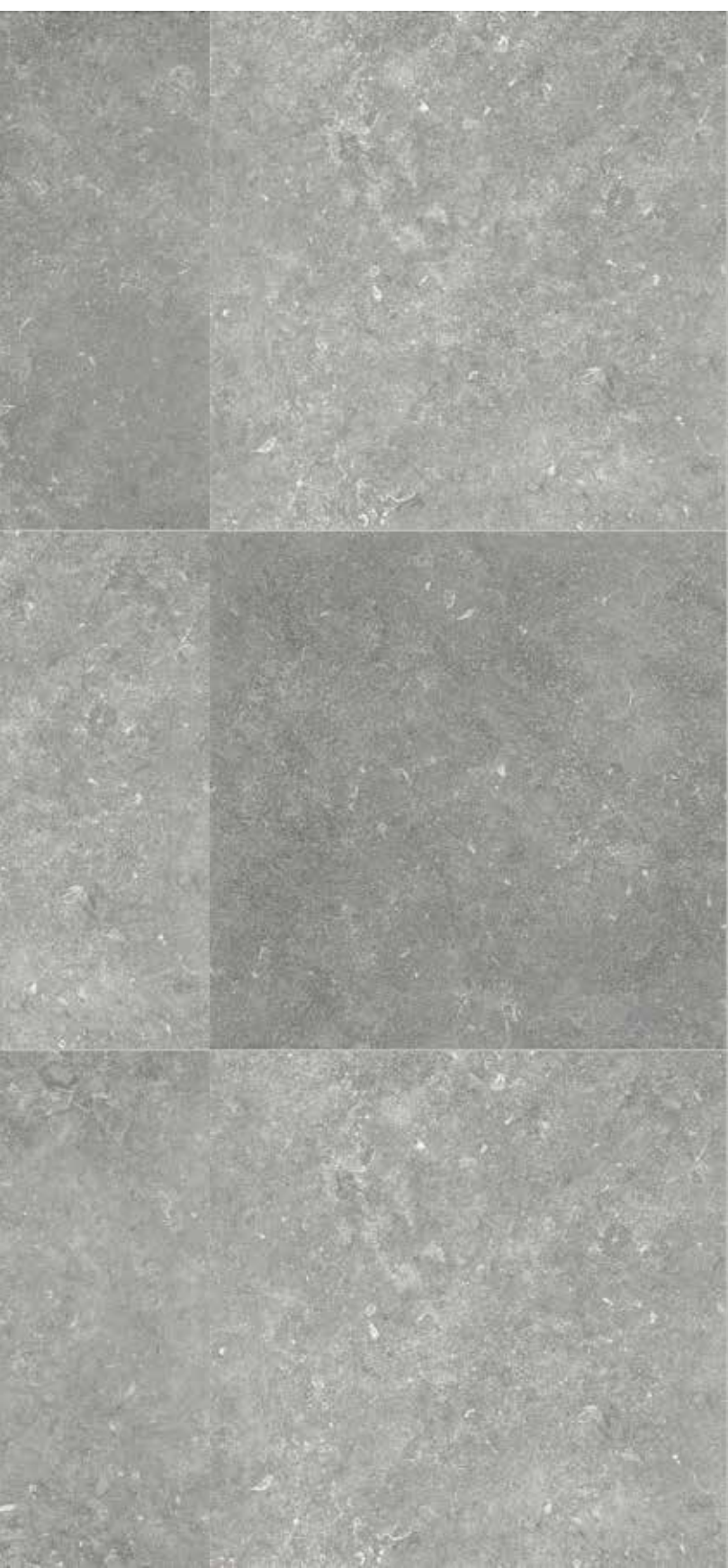
# MATT

60X60









## V3 HIGH

Product with high shade  
chromatic variation

---

Mistakes are  
the portals of  
discovery.

James Joyce



# LAPPATO

60X60





# ZWART

---

**MATT**



# MATT

60X60





**“AN ESSENTIAL ASPECT  
OF CREATIVITY  
IS NOT BEING AFRAID  
TO FAIL.”**

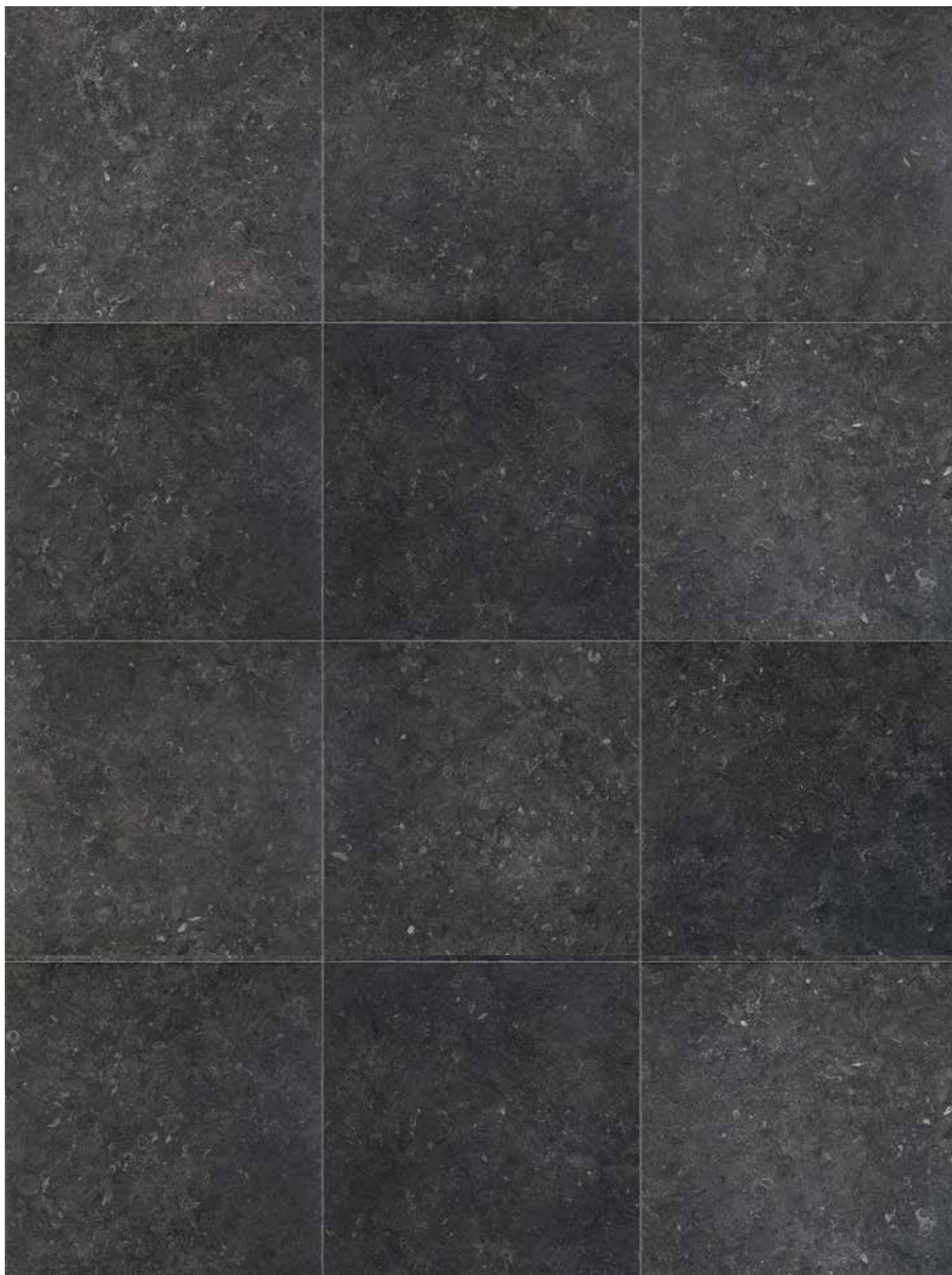
*Edwin Land*



# VINTAGE

61,5X61,5





## V3 HIGH

Product with high shade  
chromatic variation

---





A stack of five vintage leather suitcases in various shades of brown and tan, some with metal latches and handles, is placed on a dark brown wooden X-frame stand. The background features a white wall with a repeating small floral pattern. To the left is a white door, and to the right is a large, dark brown leather trunk. The floor is made of dark grey tiles.

# LAPPATO

60X60

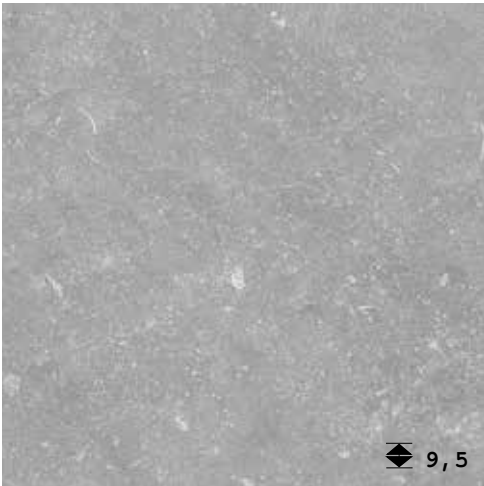




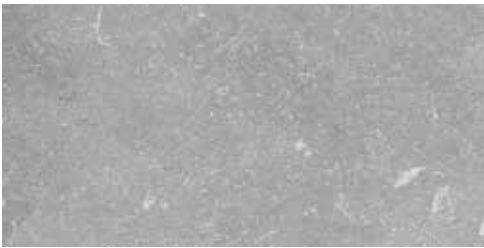


ALL SIZES ARE RECTIFIED AND MONOCALIBER

# GRIJS



**60X60**  
**(61,5X61,5 VINTAGE-UNRECTIFIED)**



**30X60**



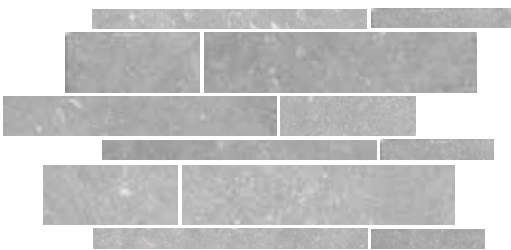
**15X60**



**10X60**



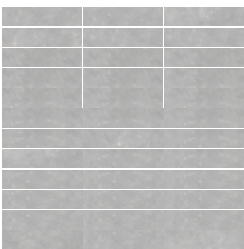
**5X60**



**MOSAIC 30X60**

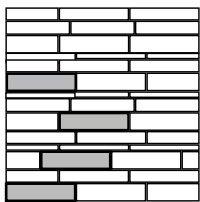


**10X10**

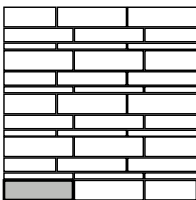


**MOSAIC 30X30**  
**(CHIP 2X10)**

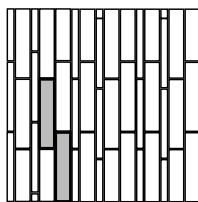
## Laying Schemes / Listels



LS1  
13% /m<sup>2</sup> 5x60 cm  
35% /m<sup>2</sup> 10x60cm  
52% /m<sup>2</sup> 15x60cm



LS2  
17% /m<sup>2</sup> 5x60 cm  
33% /m<sup>2</sup> 10x60cm  
50% /m<sup>2</sup> 15x60cm





LS3  
20% /m<sup>2</sup> 5x60 cm  
20% /m<sup>2</sup> 10x60cm  
60% /m<sup>2</sup> 15x60cm

# SIZES AND CODES

			GRIJS	ZWART
	61,5x61,5 60x60	Vintage Matt Lappato	TTSE0160V TTSE0160N TTSE0160LP	TTSE0260V TTSE0260N TTSE0260LP
	30x60	Matt Lappato	TTSE0136N TTSE0136LP	TTSE0236N TTSE0236LP
	15x60	Matt	TTSE0115N	TTSE0215N
	10x60	Matt	TTSE0110N	TTSE0210N
	5x60	Matt	TTSE0105N	TTSE0205N
	10x10	Matt Lappato	TTSE0111N TTSE0111LP	TTSE0211N TTSE0211LP
	Mosaic 30x60	Matt	TTSE01M36N	TTSE02M36N
	Mosaic 30x30 (chip 2x10)	Matt Lappato	TTSE01M2N TTSE01M2LP	TTSE02M2N TTSE02M2LP
	Step 30x60	Matt Lappato	TTSE01GN TTSE01GLP	TTSE02GN TTSE02GLP
	Skirting 7x60	Matt	TTSE01BN	TTSE02BN

# PACKAGING

						
	PIECES	SQ.MT	KG	BOXES	SQ.MT	KG
61,5X61,5 Vintage	3	1,135	23	36	40,86	828
60X60 Matt/Lap.	3	1,08	22	36	38,88	792
30X60 Matt/Lap.	6	1,08	22	40	43,2	880
15X60 Matt	12	1,08	22	40	43,2	880
10X60 Matt	15	0,90	18	40	36	720
5X60 Matt	34	1,02	19	40	40,80	760
10X10 Matt/Lap.	50	0,50	10	50	25	500
Mosaic 30x60 Matt	6	1,08	20	30	32,4	600
Mosaic 30x30 Matt/Lap. (chip 2x10)	11	1	19	60	60	1,140
Step 30x60 Matt/Lap.	6	1,08	23			
Skirting 7x60 Matt	14	8,4 ml	13,3			

Mosaicnet srl reserves the right to modify packaging details on individual orders or on particular colours and/or sizes.



# TECHNICAL FEATURES

## FULL BODY PORCELAIN STONEWARE

### FLOOR AND WALL\_HEAVY COMMERCIAL\_IN & OUT

	PHYSICAL-CHEMICAL PROPERTIES PROPRIETÀ FISICO-CHIMICHE PYSISCH-CHEMISCHE EIGENSCHAFTEN PROPRIÉTÉS PHYSICO-CHIMIQUES	STANDARD OF TEST TIPO DI PROVA TWESTNORM NORME DU TEST
	DIMENSIONS SIZES ABMESSUNGEN DIMENSIONS	EN ISO 10545-2
	WATER ABSORPTION ASSORBIMENTO D'ACQUA WASSERAUFNAHME ABSORPTION D'EAU	EN ISO 10545-3
	SURFACE RESISTANCE RESISTENZA A FLESSIONE BIEGUNGSFESTIGKEIT RÉSISTANCE À LA FLEXION	EN ISO 10545-4
	BREAKAGE RESISTANCE SFORZO DI ROTTURA BRUCHLAST RESISTANCE A LA RUPTURE	
	SCRATCH RESISTANCE RESISTENZA ALL'ABRASIONE PROFONDA BESTIMMUNG DES WIDERSTANDES GEGEN TIEFEN VERSCHLEIB RÉSISTANCE À L'ABRASION	EN ISO 10545-6
	COEFFICIENT OF LINEAR THERMAL-EXPANSION COEFFICIENTE DI DILATAZIONE TERMICA LINEARE LINEARE WÄRMEAUSSDEHNUNG COEFFICIENT LINÉAIRE DE DILATATION THERMIQUE	EN ISO 10545-8
	THERMAL SHOCK RESISTANCE RESISTENZA AGLI SBALZI TERMICI TEMPERATURWECHSELBESTÄNDIGKEIT RÉSISTANCE AUX ÉCARTS DE TEMPÉRATURE	EN ISO 10545-9
	FROST RESISTANCE RESISTENZA AL GELO FROSTBESTÄNDIGKEIT RÉSISTANCE AU GEL	EN ISO 10545-12
	CHEMICAL RESISTANCE RESISTENZA AI PRODOTTI CHIMICI CHEMIKALIENFESTIGKEIT RÉSISTANCE AUX PRODUITS CHIMIQUES	EN ISO 10545-13
	STAIN RESISTANCE OF UNGLAZED MATT PORCELAIN RESISTENZA ALLE MACCHIE DI PIASTRELLE NON SMALTATE NATURALI FLECKENBESTÄNDIGKEIT VON UNGLASIERTEN NATUR FLIESEN RÉSISTANCE AUX TACHES DES CARREAUX NON EMAILÉS NATUREL	EN ISO 10545-14
	BRILLIANCE BRILLANTEZZA GLANZ BRILLANT	
	COLOURS RESISTANCE TO LIGHT RESISTENZA DEI COLORI ALLA LUCE LICHTBESTÄNDIGKEIT DER FARBEN RÉSISTANCE DES COULEURS À LA LUMIÈRE	DIN 51094
	SLIP RESISTANCE RESISTENZA ALLO SCIVOLAMENTO RUTSCHFESTIGKEIT RÉSISTANCE À LA GLISSANCE	DIN 51130 DIN 51097 D.M. 236/89 B.C.R. ASTM C1028

REQUIRED VALUE VALORE PRESCRITTO VORGESCHRIEBENER WERT VALEUR PRESCRITE	PRODUCT VALUE VALORE PRODOTTO PRODUKT WERTE VALEUR PRODUIT
<p>N ≥ 15 cm Length and width-Lunghezza e larghezza-Länge und Breite-Longueur et largeur</p> <p>Thickness-Spessore-Stärke-Epaisseur ±0.6% 2.0 mm Linearity-Rettilineità spigoli-Kantengeradheit ±5.0% 0.5 mm Rectitude des arêtes ±0.5% 1.5 mm Wedging-Ortogonalità-Rechtwinkligkeit-Orthogonalité ±0.5% 2.0 mm Flatness-Planarità-Ebentüchigkeit-Planéité ±0.5% 2.0 mm</p>	<p>Conforming Conforme Erfüllt Conforme</p>
<p>E<sub>b</sub> ≤ 0,5%</p>	<p>Average/Medio/Mittelwert/Moyenne E<sub>b</sub> ≤ 0,1%</p>
<p>Medium value 35 N/mm<sup>2</sup> min.</p>	<p>Conforming Conforme Erfüllt Conforme</p>
<p>sp. &gt; = 7,5 mm: min 1300 N sp. &lt; 7,5 mm: min 700 N</p>	<p>Conforming Conforme Erfüllt Conforme</p>
<p>175mm<sup>3</sup> max.</p>	<p>Average/Medio/Mittelwert/Moyenne &lt;150mm<sup>3</sup></p>
<p>Testing method available Metodica di prova disponibile Prüfverfahren greifbar Norme d'essais</p>	<p>6,2 MK<sup>-1</sup></p>
<p>Testing method available Metodica di prova disponibile Prüfverfahren greifbar Norme d'essais</p>	<p>Resistant Resistente Widerstandsfähig Résistants</p>
<p>Required Richiesta Gefordert Requise</p>	<p>Resistant Resistente Widerstandsfähig Résistants</p>
<p>Test method available Metodo di prova disponibile Verfügbare prüfmethode Methode d'essai disponible</p>	<p>Resistant Resistente Widerstandsfähig Résistants</p>
<p>Test method available Metodo di prova disponibile Verfügbare prüfmethode Methode d'essai disponible</p>	<p>Resistant Resistente Widerstandsfähig Résistants</p>
	<p>More or equal to that of marble and granite. Maggiore o uguale a quella dei marmi e graniti. Mindestens so dauerhaft wie der von Marmor und Granit. Supérieur ou égal à celui des marbres et des granits.</p>
<p>No noticeable color change. Non devono presentare apprezzabili variazioni di colore. Die Muster dürfen keine sichtbaren Farbveränderungen aufweisen. Ne doivent pas présenter de variations importantes des couleurs.</p>	<p>No alteration after testing Materiale inalterato dopo il test Keine Veränderung nach dem Test Aucune altération relevée</p>
<p>If needed Dove richiesto Nach anforderung Si demande</p>	<p>Matt and Vintage finish: R10 / Lappato finish: R9 Matt and Vintage finish: A Test available Prova disponibile Verfügbare Prüfungen Essai disponible</p>





The only way to do great work is  
to love what you do.

If you haven't found it yet,  
keep looking. Don't settle.

As with all matters of the heart,  
you'll know when you find it.

And, like any great relationship,  
it just gets better and better  
as the years roll on.

So keep looking until you find it.  
Don't settle.

Steve Jobs





'Stay hungry, stay foolish'.  
S.Jobs 1955-2011



PROJECT BY TERRATINTA MKTG LAB  
PRINTED IN ITALY, MAY 2013  
TERRATINTA CERAMICHE® ALL RIGHTS RESERVED



a brand of Mosaicnet srl

Showroom and Offices: 20, via Panaro 41042 Fiorano Modenese (Mo) ITALY  
Tel. +39 0536911408 Fax. +39 05361940223

[www.terratinta.com](http://www.terratinta.com)



/TerraTinta Ceramiche



@TerraTinta\_Cer